



# OUR STRATEGY TOWARDS 2030

PART OF

# WELCOME







Since Newcastle Sixth Form College was established in 2013 it has forged a strong identity as a welcoming and inclusive community, where students progress exceptionally well to university and other ambitious destinations.

This success is built upon a culture of high expectations, strong teaching and learning, and extensive support to enable students to succeed. The dedicated team of professionals who work at Newcastle Sixth Form College are united by a common belief in the transformative power of education for the young people who choose to study with us.

This document sets out how as part of the wider NCG mission and strategy the college will continue to develop through to 2030.

Simon Ross, Principal  
Newcastle Sixth Form



Newcastle Sixth Form College is an anchor institution at the heart of Newcastle Upon Tyne, at a time when communities need the opportunities provided by further education colleges more than ever.

As part of NCG, Newcastle Sixth Form College plays a key role in supporting our mission to enable social mobility and economic prosperity in the North East and beyond.

Newcastle Sixth Form College works in partnership with local government, employers, civic and community stakeholders, to develop and deliver high-quality education that is responsive to local, regional and national skills needs. These partnerships support Newcastle Sixth Form College and NCG to develop a workforce of the future, with the skills and talents that our local communities need to be successful and sustained.

Learners are at the heart of Newcastle Sixth Form College, and I have seen first-hand the life-changing opportunities and experiences on offer here.

Liz Bromley, Chief Executive  
NCG Group

# NEWCASTLE SIXTH FORM COLLEGE IS PART OF NCG

Newcastle Sixth Form College is proud to be part of NCG, one of the country's leading college groups, supporting tens of thousands of learners through its nationwide network of colleges:

- Carlisle College
- Kidderminster College
- Lewisham College
- Newcastle College
- Newcastle Sixth Form College
- Southwark College
- West Lancashire College

As part of NCG we work in partnership to support a clear mission – to enable social mobility and economic prosperity through exceptional education.

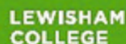
NCG colleges offer a wide range of vocational Further Education and Higher Education courses and training programmes, including apprenticeships, employability and workplace learning, and work to support those in our communities who need it most.

We're the first Further Education institution in the UK to be awarded Taught Degree Awarding Powers (TDAP) on an indefinite basis, enabling us to develop and award our own Honours and Master's degrees.

Together, we play a key role in providing education and training to learners, apprentices and employers across the UK, building a skilled and talented workforce for the jobs of tomorrow.

We believe in the transformative power of education, and we develop partnerships with government, employers and community stakeholders that help us to address local, regional and national skills challenges, respond to the needs of our region's key industries and support the ambitions of our local and national government.

These collaborations are key to our success in changing lives and accomplishing real change for individuals, communities and economies across the country.





# OUR CONTEXT

Newcastle Sixth Form College is the largest provider of A Levels in Newcastle and the only dedicated Sixth Form College in the city. Students join from over 100 schools, travelling from as far north as Berwick upon Tweed to join a welcoming and inclusive college that acts as a bridge to their next steps. Students succeed in an environment of safety where they can be themselves. The college has a track record of success with student progress above the national average and exceptional progression to higher education.

In 2024 students at Newcastle Sixth Form College were 15% more likely to progress to university based on prior attainment and 4% more likely to progress to a 'Sutton 30' institution than students nationally (SFCA, 2024).

Newcastle is in an area of significant social deprivation. The city is amongst the 10% most deprived in the country, and unemployment has risen to 5.3% (ONS, 2024). 17% of 16–24 year olds in the North East are not in education, employment or training, which is the highest nationally (DfE, 2024). School GCSE performance in Newcastle is significantly below the national average with only 42% achieving Maths and English at Grade 5, and a progress 8 score of -0.28 (DfE, 2024).

Additionally, the North East has one of the lowest rates of University progression nationally. In 2024, 29% of students accepted UCAS offers in the North East compared to 51% in London (UCAS, 2024). In 2024, 56% of the year 13 cohort at NSFC were from POLAR one and two postcodes, the areas with the lowest progression to University nationally.


However, Newcastle is also an exciting and well connected city and LMI suggests job opportunities are set to increase with an additional 61,300 jobs (UCAS, 2024). The proportion of professional occupations is comparatively high at 33% (NOMIS, 2024).

The North East Local Skills Improvement Plan also identifies these 'better jobs' as key areas of growth. It also emphasises the development of cross sector skills such as digital, literacy and numeracy, transferable behaviour skills, and aspirational vocational careers knowledge. Newcastle Sixth Form College therefore has a vital role in removing barriers for young people in the North East to allow them to fulfil their potential in the region and beyond.



# OUR MISSION

Enabling social mobility and  
economic prosperity through  
exceptional education.



Newcastle Sixth Form College has a clear widening participation remit. We retain some of the most inclusive entry criteria to study A Levels in the North East and our proven track record of successful value-added means that we are enabling more young people to progress to higher level destinations.

We deliver an exceptional access route for all students and at the core of our success is a clear commitment to delivering the highest quality education. We believe in the life-long transformative effect of this for our learners.



## WORKING HARD TO SECURE THEIR AMBITION

*'I was at home for quite a long time,  
and the sixth form gave me the  
opportunity to learn'*

Samuella is a success story of her own making. She is driven, hard working and dedicated. Having joined the college as a Year 12 Access student, Samuella has exceeded expectations, winning Student of the Year in three subject categories in 2024 and progressing onto A Levels.



A decorative orange L-shaped frame surrounds the text. It consists of two thick orange lines forming the top and left sides of a square, and two thick orange lines forming the top and right sides of a square, with the bottom and right sides of the squares being open.

# OUR VISION

Newcastle Sixth Form College's vision is to be the best provider in the North East at enabling students to fulfil their potential.

We will do this by providing a curriculum that is academic, inclusive, aspirational and creates an environment that adds value and enriches. This will mean that students thrive during their time at the college, make exceptional progress and go on to ambitious destinations, so that they could not have made a better choice for A Level study.



# OUR *VALUES*

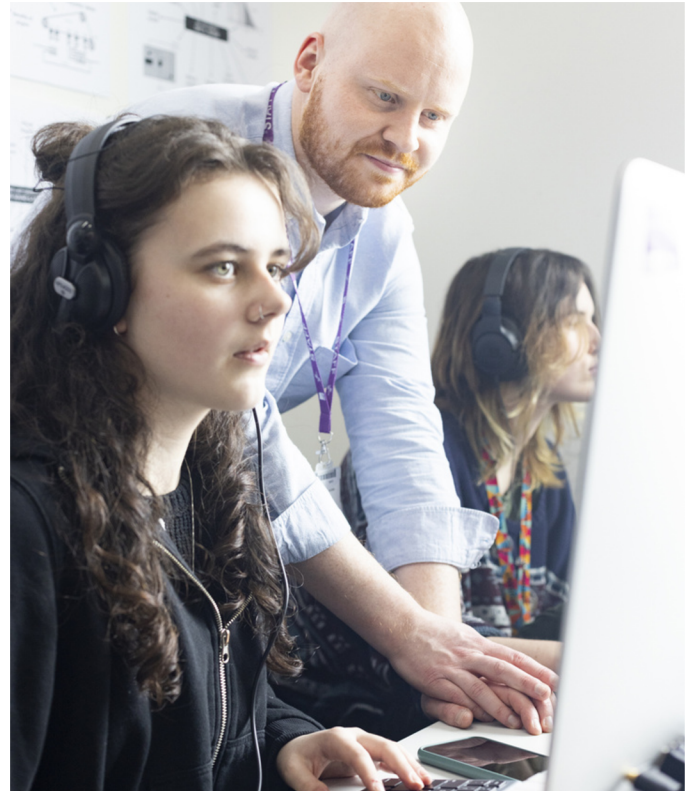


# OUR COMMITMENT TO COLLEAGUES

The success of our strategy is reliant upon the collective and individual strength and commitment of our colleagues. Newcastle Sixth Form College benefits from passionate and talented colleagues, who form a community committed to supporting our students to develop their skills and talents and achieve their aspirations.

Underpinning this strategy is our commitment to our colleagues that we will:

- Value our people and continue to develop a culture within which staff collaborate with and support each other, and are empowered to take responsibility for achieving excellence in their areas and in the College as a whole.
- Respect our colleagues and trust them to take ownership for their actions
- Continue to commit to a future where each and every colleague is proud to recommend the College to loved ones, family, friends and others as a great place to learn.
- Recognise and value diversity in our college community, and do our upmost to create a working environment in which colleagues can excel and innovate and have the opportunity to enjoy their work.
- Provide opportunities for our colleagues to develop their personal and professional expertise, including, in our capacity as an NCG college, promote opportunities to develop through working with colleagues from across NCG and celebrate our success together.







# OUR STRATEGIC GOALS

Exceptional teaching, learner  
experience and outcomes.

Innovative, relevant courses and  
qualifications.

Ambitious and responsible educators  
and leaders.

Financial sustainability and powering  
reinvestment.

Impactful external engagement and  
civic commitment.

# STRATEGIC OBJECTIVES

## 2025 – 2030

1

### EXCEPTIONAL TEACHING, LEARNER EXPERIENCE AND OUTCOMES

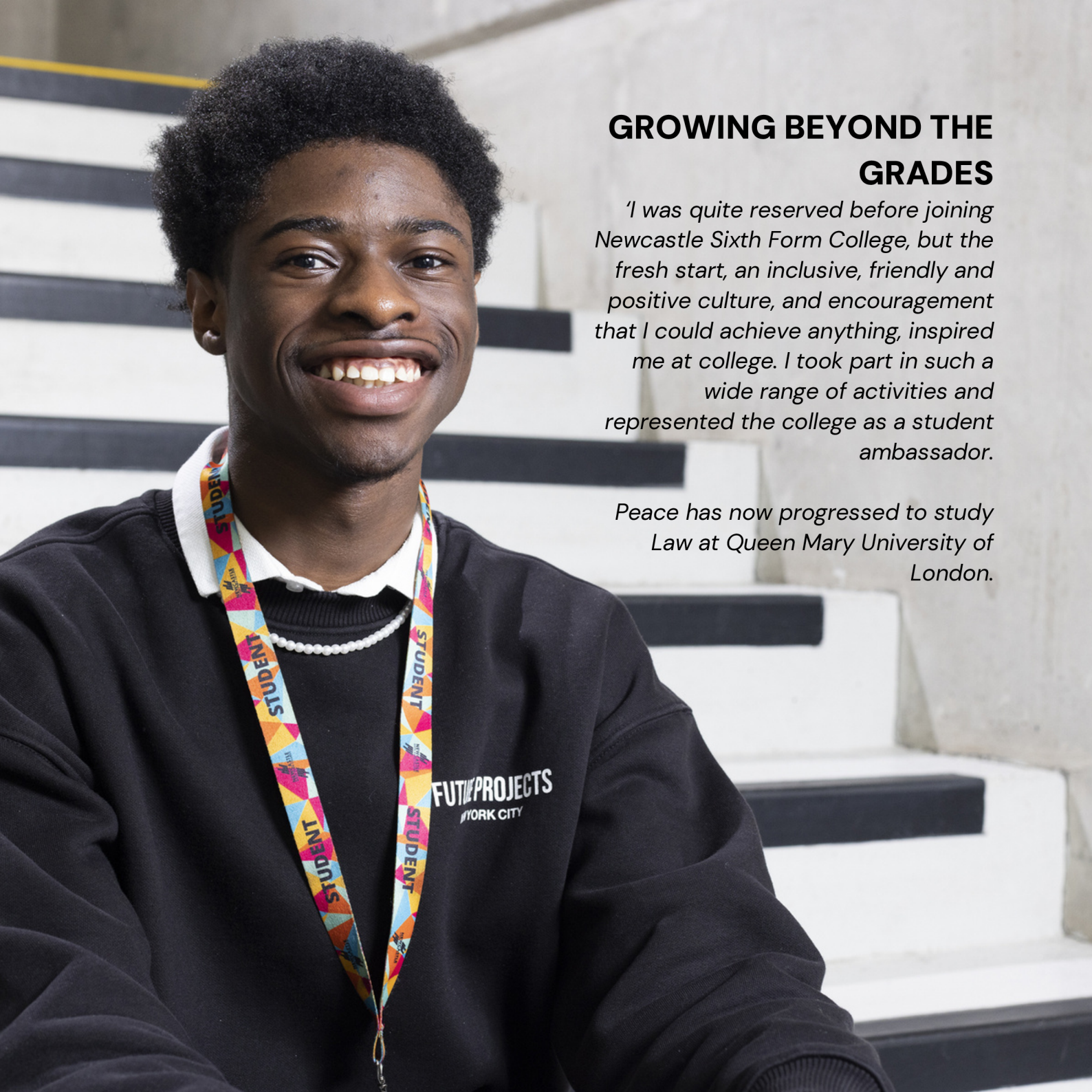
We will provide an exceptional learner experience through high quality teaching and learning, with excellent wrap around support that adds value and prepares students to make progress in the top 25% nationally in their A Levels, including for students from disadvantaged backgrounds.

We will increase our full-time 16–19 student numbers by 3% annually, expanding the number of students completing A Levels including STEM, to grow to 1500 learners by 2030. This will mean that more students benefit from our exceptional teaching and learning, and culture of high expectations.

2

### INNOVATIVE, RELEVANT COURSES AND QUALIFICATIONS

We will provide an aspirational curriculum that enriches and develops the wider skills students need for their next steps, so that progression to university and other ambitious destinations is sector leading, including for students from widening participation backgrounds.



## GROWING BEYOND THE GRADES

*'I was quite reserved before joining Newcastle Sixth Form College, but the fresh start, an inclusive, friendly and positive culture, and encouragement that I could achieve anything, inspired me at college. I took part in such a wide range of activities and represented the college as a student ambassador.'*

*Peace has now progressed to study Law at Queen Mary University of London.*



### 3 AMBITIOUS AND RESPONSIBLE EDUCATORS AND LEADERS

We will put our people first by investing in their commitment to the students, by providing high quality professional development opportunities that meet colleague's needs and interests throughout their career.

### 4 FINANCIAL SUSTAINABILITY POWERING REINVESTMENT

We will maintain financial viability to support long-term growth, ensuring we continue to have the resources to provide a comprehensive academic A Level offer and enrichment for students from diverse backgrounds across Newcastle and the North East.

### 5 IMPACTFUL EXTERNAL ENGAGEMENT AND CIVIC COMMITMENT

We will work across the sixth form, the NCG 'family of colleges' and across the wider sector to identify and share best practice, becoming the nationally recognised experts in inclusive academic education.

We will ensure our local board is representative of our college and local community and the experience of members aligns with the ambitions of our students, with representation from employers and universities, and the local & civic community.





Newcastle Sixth Form College  
Westmorland Rd, Newcastle upon  
Tyne NE4 7SA  
Tel: +44 (0) 0191 272 1001  
[www.newcastlesixthformcollege.ac.uk](http://www.newcastlesixthformcollege.ac.uk)

#### VISIT OUR WEBSITES

[www.carlisle.ac.uk](http://www.carlisle.ac.uk)  
[www.kidderminster.ac.uk](http://www.kidderminster.ac.uk)  
[www.lewisham.ac.uk](http://www.lewisham.ac.uk)  
[www.newcastlecollege.co.uk](http://www.newcastlecollege.co.uk)  
[www.newcastlesixthformcollege.ac.uk](http://www.newcastlesixthformcollege.ac.uk)  
[www.southwark.ac.uk](http://www.southwark.ac.uk)  
[www.westlancs.ac.uk](http://www.westlancs.ac.uk)