



Newcastle Sixth Form College

COURSE GUIDE

2025





CONTENTS

03

**Welcome to Newcastle
Sixth Form College**

04

**Where do our students go
after A-Levels?**

06

**Personal Development
and learner support**

08

**Help with costs
College Bursary**

10

**Our Subjects
(A Level & GCSE)**

66

Open Events

WELCOME TO NSFC



We are the largest A Level Sixth Form College in the region with over 1,200 students and 100 dedicated staff, providing a wide range of A Levels.

At Newcastle Sixth Form College we are proud that we offer an aspirational culture and ethos for our students, with expert subject staff, and highly focussed student services, personal development and learning support. This ensures every student has the greatest opportunity to achieve the best outcome from their A Level studies.

We work extremely hard to ensure our students achieve their goals. From the start of their time at the college we assist every student in their progression onto Higher Education, apprenticeships or advanced employment opportunities. The academic environment enables students to develop the skills and knowledge to progress with confidence. Our state of the art facilities provide a university style campus, and our specialist careers development programme gives exceptional access to university choices.

We are a highly inclusive college with a diverse and integrated student body. We place a huge value on both our Respect Ethos, and also our parental engagement. This approach means that students at Newcastle Sixth Form enjoy the opportunity to study and socialise within a positive welcoming site.

Finally, we are keen to add value at every opportunity at Newcastle Sixth Form College. From our extensive programme of enrichment activities to our wider curriculum activities, we ensure that our students gain the numerous opportunities not offered in other educational settings.

Studying A Levels is a significant undertaking for any young person and we have created a support framework which ensures students are able to go further and progress to universities across the country.

I hope to see you at one of our Open Events and look forward to you joining us on your A Level journey.

A handwritten signature in blue ink, appearing to read 'SR', with a horizontal line underneath.

Simon Ross
Principal

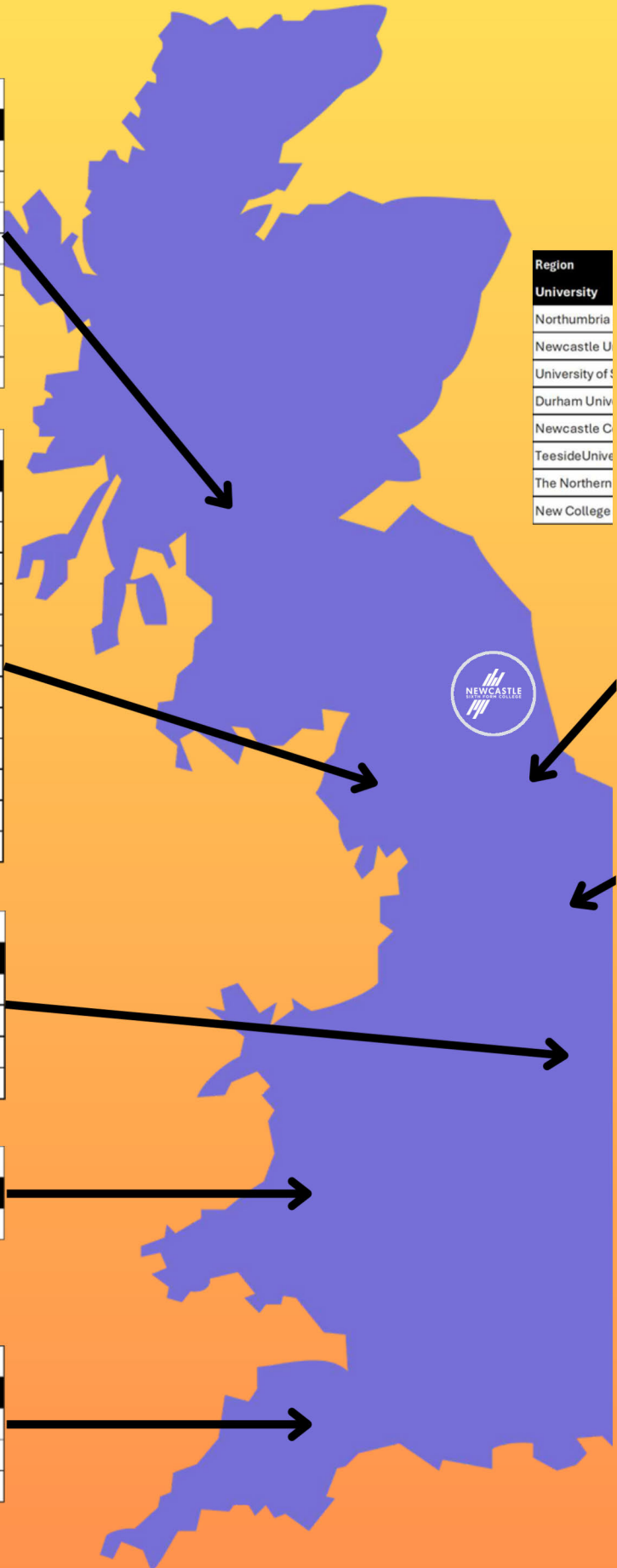
Region	Scotland
University	Number of Students
University of Stirling	8
The University of Edinburgh	4
University of Dundee	2
Heriot-Watt University	2
Edinburgh Napier University	1
University of Glasgow	1
University of the Highlands and Islands (UHI)	1
University of Strathclyde	1

Region	North West
University	Number of students
Manchester Metropolitan University	15
University of Salford	6
University of Manchester	4
University of Bolton	3
University of Central Lancashire	3
University of Liverpool	3
University of Cumbria	2
Liverpool John Moores University	2
Lancaster University	1
Liverpool Hope University	1
Liverpool Institute for Performing Arts	1
University Centre Myerscough	1

Region	East Midlands
University	Number of students
University of Lincoln	4
University of Nottingham	3
Nottingham Trent University	3
University of Derby	1

Region	Wales
University Name	Number of students
Cardiff University	2

Region	South West
University Name	Number of Students
University of Plymouth	2
University of Exeter	1
Hartpury University	1



Where do our students go to after NSFC?

The range of degrees and the number of destinations for our students grows year on year. Our commitment to improving social mobility and providing our students with the widest range of opportunities for HE progression is at the heart of our ethos.

Students were 14% more likely to progress onto University if they studied at Newcastle Sixth Form College, and 4% more likely to attend a Russell Group university.

Source - Sixth Form College Association, Sixth Dimension Report 2024

North East	
University	Number of students
University	113
University	59
Sunderland	42
University	7
College University Centre	4
University, Middlesbrough	2
School of Art	1
Durham	1

Yorkshire and The Humber	
University	Number of students
York St John University	20
Leeds Beckett University	11
University of York	8
University of Leeds	7
University of Sheffield	4
University Centre Ashkam Bryan	1
Hull York Medical School	1
Leeds Art University Centre	1
Sheffield Hallam University	1

East of England	
University	Number of Students
Anglia Ruskin University	3
University of Cambridge	2
University of Essex	1

London	
University Name	Number of Students
Kings College London, University of London	2
London Metropolitan University	2
London South Bank University	2
University of Westminster, London	2
Birkbeck, University of London	1
City, University of London	1
University of East London	1
University of Greenwich	1
Istituto Marangoni London	1
Imperial College London	1
The University of Law	1
Middlesex University	1
St Mary's University, Twickenham	1
UCFB	1
University of the Arts London	1
UCL (University College London)	1

South East	
University Name	Number of Students
University of Brighton	2
University for the creative arts	2
Kent and Medway Medical School	1
University of Oxford	1
Oxford Brookes University	1
Royal Holloway University of London	1
University of Sussex	1



PERSONAL DEVELOPMENT

Just one of the significant advantages of attending Newcastle Sixth Form College is the Personal Development Coaching Team, who are dedicated to making sure you get the most from your A Level journey.

From your first moments at NSFC, where you make the significant adjustments to new subjects, build new friendship groups and get to know the large new campus; to the moment you leave on results day, and set off to university or into your first career role, PDCs will be with you.

Your Personal Development Coach is your first point of contact for you, and your family, while you are at NSFC. Your PDC is there to support you pastorally, to follow up attendance concerns and to guide you as you explore your options for higher education, progression or employment.

You will attend two, 1 hour weekly Personal Development Lessons in your PD class each week. You will also have regular 1:1s with your coach throughout the year.

In your weekly group lesson, you will develop the following skills, knowledge, and behaviours:

- Personal growth.
- The A-Level VESPA mind-set (Vision, Effort, System, Practice, Attitude);
- Academic coaching and reviewing of monitoring points for termly progress;
- Fundamental British Values, Extremism, and Prevent;
- Career Research and Labour Market Information;
- How to read a payslip, manage taxes, and more;
- Online Safety;
- Vision and goals;
- Next steps (UCAS application, jobs and careers);
- Employability skills (CV, job interviews, and Higher Level Apprenticeship Application);
- Wellbeing, and Mental Health Awareness.



TARGET SUPPORT

The Target Team provides a range of support to students with identified learning needs, medical conditions or disabilities. The support is available throughout your entire time at Newcastle Sixth Form College.

The team provide a specialist assessment for each student, to establish what support is required, and work in collaboration with curriculum staff to reduce barriers to learning, enhancing opportunity and success.

If you have disclosed an additional support need in your application, you should already have been referred to the Target Learning Support Team, or you can contact the team directly on:

0191 226 6275

NSFCtargetenquiries@newcastlesfc.ac.uk

MENTAL HEALTH SUPPORT

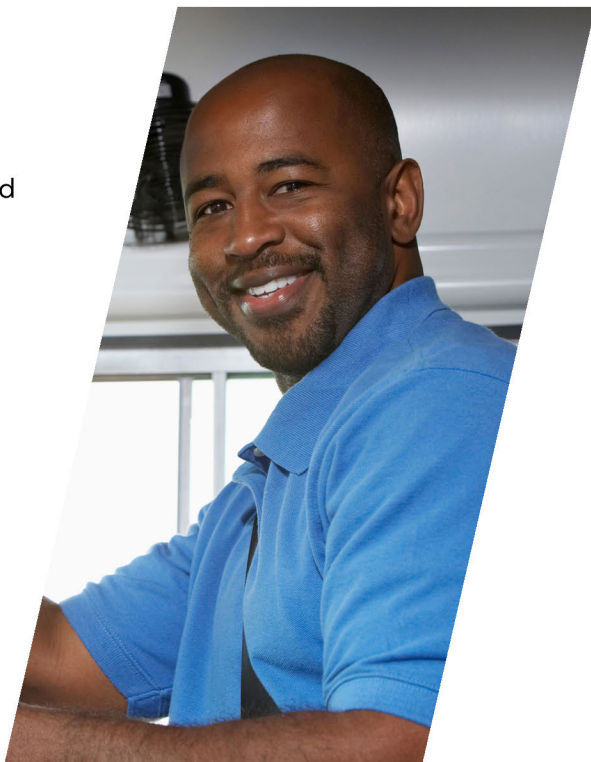
We have a qualified team of Mental Health First Aiders at NSFC. You can also make a referral to the college counsellor if you think you need additional support.



See how our learning support team can assist you

BURSARY SUPPORT PACKAGE

Here at NSFC we believe that finance should not be a barrier to education. We provide a range of customised financial support which you may be eligible for, depending on your individual circumstances.



IF YOUR HOUSEHOLD INCOME IS LESS THAN £32,300 YOU MAY QUALIFY FOR:

Travel Support – Bus/Metro travel passes. Train support will be agreed on an individual basis. To receive travel support you must live 2 miles or more from campus.

Meal Support – A meal allowance of £4.50 for each timetabled day in college.

Equipment and Trip Support – Help with essential subject and trip related costs.

University costs – Help with Open Days, University interviews, and UCAS costs.

Laptop Support – A college laptop may be available to you to support with independent study and coursework.



HELP WITH COSTS

NSFC BURSARY REQUIREMENTS

The Newcastle Sixth Form College Bursary provides eligible students travel support through the provision of travel passes, this is dependent on household income and miles travelled from home to college.

TO QUALIFY FOR THE COLLEGE BURSARY, STUDENTS MUST:

- Be living within a household with an income of £32,300 and below.
- The student must have a bank account in their own name which can accept BACS payments. Payments cannot be made to family or friend's accounts.
- College bursary support is subject to attendance. The expectation is students achieve at least 95% attendance for all aspects of their study programme at college, including all personal development and enrichment sessions.

FREE COLLEGE MEALS

Students who receive bursary will also be entitled to free college meals support, with a value of £4.50 per day to be used within college.

GOVERNMENT FUNDED BURSARY

A bursary of up to £2,500 is available to young people in one of the following defined groups, which includes:

- Young people in care, care leavers or an unaccompanied asylum seeker.
- Young people claiming Universal Credit in their own right.
- Young people who receive Disability Living Allowance or Personal Independence Payments, in addition to Universal Credit, all in their own right.

SUBJECTS

Our A Level Programme is designed to support you in your progression to Higher Education or Degree Apprenticeships.

Expert teachers in each subject ensure you receive dedicated face to face learning, with daily subject lessons combined with a supportive personal development programme, enrichment, careers advice and independent study.

You will follow a programme of 3 A Levels in Year 12, and for those with excellent progression and attendance we run an Extended Project Qualification in Year 13.

You are not restricted by your subject combinations, but our consultation evenings are designed to help you select the correct combination of subjects to improve your chances of progressing to higher education and follow the pathway to a successful career.



Page 12



ART, CRAFT & DESIGN

Page 14



BIOLOGY

Page 16



BUSINESS STUDIES

Page 18



CHEMISTRY

Page 20



COMPUTER SCIENCE

Page 22



DRAMA AND THEATRE

Page 24



ECONOMICS

Page 26



ENGLISH LANGUAGE

Page 28



ENGLISH LITERATURE

Page 30



FILM STUDIES

Page 32



FURTHER MATHEMATICS

Page 34



GEOGRAPHY

Page 36



GRAPHIC COMMUNICATION

Page 38



HISTORY

Page 40



LAW

Page 42



MATHEMATICS

Page 44



MEDIA STUDIES

Page 46



MUSIC TECHNOLOGY

Page 48



PHILOSOPHY, ETHICS AND RELIGION

Page 50



PHYSICS

Page 52



POLITICS

Page 54



PSYCHOLOGY

Page 56



SOCIOLOGY

Page 58



SPANISH

Page 60



EXTENDED PROJECT

Page 62



CORE MATHS

Page 64



YEAR 12 ACCESS

SUBJECT

ART, CRAFT & DESIGN A Level

ABOUT A LEVEL ART, CRAFT & DESIGN

Our vibrant and dynamic A-level Art, Craft and Design course builds on the GCSE specification to offer exciting opportunities for higher education and inspire a life-long interest in, and enjoyment of, the arts.

We will cover areas of Fine Art, Graphic Communication, Photography and Textiles before personalising projects for our main components.

WHY STUDY THIS SUBJECT?

Art, Craft, and Design equips you with the skills to create personal and imaginative work. You can specialise in various processes and media, aligning with your interests and abilities, leading to careers in fields like portrait painting, fashion design, or architecture. If you're adventurous, creative, and eager to shape the visual world, there are many career opportunities available for you.

WHAT CAN YOU EXPECT FROM A LEVEL ART CRAFT AND DESIGN?

At A-level in year 12, you will explore Graphic Communication, Fine Art, Photography, and Textiles. Component 1 accounts for 60% of your A-level marks whilst Component 2 makes up the remaining 40%.

WHAT CAN I DO WITH A QUALIFICATION IN THIS SUBJECT?

Having an A level in a creative subject is an essential starting point for students who wish to follow an art and design career path, but also hugely valuable for those who might not.

After completing your A levels, you can choose to go on to an Art and Design Foundation Diploma or apply directly for higher level degree courses.

During recent years, students at Newcastle Sixth Form College have achieved places at Central St Martins, Kingston School of Art, University of Newcastle along with many other leading art schools across the UK.

HOW IS THE SUBJECT ASSESSED?

The 2 components are assessed on the evidence in your Portfolio and sketch books.

The marks you get for each component are assessed and provide your final grade for the A-level.

COURSE SUMMARY

Component 1

You will develop work for a personal investigation into an idea, issue, concept or theme supported by written material of 1000-3000 words.

Component 2

You will produce personal work in response to one of eight exciting starting points. This will be an externally set assignment (15 hour supervised time).

Entry Requirements

GCSE - Grade 5 in an Art and Design subject

(Portfolio required for GCSE in other creative subjects or BTEC Art)





Apply Now

SUBJECT

BIOLOGY A Level

ABOUT A LEVEL BIOLOGY

Biology is the study of all living things. You will look at how individual molecules interact with each other, how they form tissues, organs and organisms and how these organisms interact with their environment on a global scale.

WHY STUDY THIS SUBJECT?

Studying biology will develop your understanding of the living world and enable you to explore the applications and implications of this living science. You develop understanding of concepts at a deeper level than GCSE – If you've ever wanted to know how glucose is made using sunlight, or how our environment can affect our DNA, Biology is for you.

WHAT CAN YOU EXPECT FROM A LEVEL BIOLOGY?

Biology is a fast paced course. You will be challenged to learn something new every lesson. You will develop many skills, from mathematics and data analysis to essay writing and drawing. Biology students need to be motivated and excited by living things and how they work. As an A Level course it has significant depth and you will encounter new and fascinating topics in most lessons.

WHAT CAN I DO WITH A QUALIFICATION IN THIS SUBJECT?

Although careers in healthcare (e.g. Medicine, Biomedical Scientist, Pharmacy) are often the first that spring to mind when considering Biology, the skills you develop in Biology will enable you to access many different careers. Many of our students are interested in working with animals, chemical or industrial research, engineering, psychology, environmental science and some less obvious choices such as law. All of these career paths are accessible with an A Level in Biology.

HOW IS THE SUBJECT ASSESSED?

Biology is assessed by three externally marked exams sat at the end of year two. Questions expect you to be able to use a mixture of recall, maths, application and experimental data analysis.

Paper 3 also contains a synoptic essay. You will complete at least 12 required practicals over the course. These are assessed by a teacher and form an additional qualification component called 'practical endorsement'.

COURSE SUMMARY

Year One

- Biological Molecules.
- Cells.
- Exchange with the Environment.
- Genetic Information and Variation.

Year Two

- Energy transfers in and between organisms.
- How organisms respond to changes in internal and external environments.
- Genetics, evolution and ecosystems.
- Control of gene expression.

Entry Requirements

GCSE – Grade 6 in Maths

GCSE – Grade 6 in Biology or 6–6 in Combined/Dual Science





Apply Now

SUBJECT

BUSINESS STUDIES A Level

ABOUT A LEVEL BUSINESS STUDIES

This course will allow you to develop a broad understanding of business organisations and provide you with the knowledge of the key business functional areas.

The curriculum reflects the ever-changing character of business and the rapid growth of new technologies.

WHY STUDY THIS SUBJECT?

This is a fantastic subject as you'll engage with the world of business through the context of current business developments and real business situations. You'll learn how management, leadership and decision-making can improve performance in marketing, operational, financial and human resources. The subject provides a grounding in a wide range of skills which are vital for university and employment.

WHAT CAN YOU EXPECT FROM A LEVEL BUSINESS STUDIES?

You will study four core areas – Marketing and People, Managing Business Activities, Business decisions and strategy and global Business. You will learn in a collaborative environment with some teacher led activities, group work and also research projects. You will have the opportunity to attend guest lectures with key industry figures and high profile universities.

WHAT CAN I DO WITH A QUALIFICATION IN THIS SUBJECT?

The subject opens many doors including undergraduate study and careers in Business, Marketing, Finance, Accounting and Human Resources.

This is a good A Level for students with an entrepreneurial passion and for those who wish to run and manage a high level organisation.

HOW IS THE SUBJECT ASSESSED?

The subject is assessed through three exam papers at the end of your second year. You will have the opportunity to build your skills in these exams throughout the course with regular feedback and areas for development.

COURSE SUMMARY

Theme 1

Marketing and People.

Theme 2

Managing Business Activities.

Theme 3

Business Decisions and Strategy.

Theme 4

Global Business.

Entry Requirements

GCSE – 5 or above in Business Studies (If studied at GCSE Level)



Apply Now

SUBJECT

CHEMISTRY A Level

ABOUT A LEVEL CHEMISTRY

Chemistry attempts to give solutions to many of the world's challenges.

From investigating how to make sustainable processes to researching a new wonder drug to save millions of lives, the opportunities that chemistry provides are endless, and you will have the opportunity to build essential skills and develop rapidly through this subject.

WHY STUDY THIS SUBJECT?

Studying chemistry will deepen your understanding of reality. During A level Chemistry you will gain a broader understanding of topics from Chemistry GCSE and develop new concepts.

You will also develop a vast array of essential transferable skills such as logical problem solving and data analysis.

WHAT CAN YOU EXPECT FROM A LEVEL CHEMISTRY?

Chemistry is a broad course with 34 topics. You will be challenged to learn something new every lesson and supported to make progress. We will provide all the resources and expert support to ensure you pass your required practical certificate.

WHAT CAN I DO WITH A QUALIFICATION IN THIS SUBJECT?

Chemistry offers a broad and exciting range of careers. We have former students who are doctors, dentists, chemical engineers, vets, aeronautical and chemical engineers.

While many of these careers are the first that spring to mind when considering Chemistry, the skills you develop will enable you to access many different careers. Many of our students are interested in working with animals, medical, chemical or industrial research, engineering, psychology or environmental science.

HOW IS THE SUBJECT ASSESSED?

Chemistry is assessed by three externally marked exams sat at the end of year two.

Paper 1 is a mixture of inorganic and physical chemistry.

Paper 2 is a mixture of organic and physical chemistry.

Paper 3 is a mixture of all three subject areas, that includes a multiple choice paper.

COURSE SUMMARY

Year One

- Atomic Structure, Amount of Substance, Bonding, Periodicity.
- Energetics, Kinetics, Chemical Equilibria.
- Redox Reactions, Group 2 (Alkaline Earth Metals), Group 7 (Halogens).
- Organic Chemistry.

Year Two

- Thermodynamics, Rate Equations, and Electrochemistry.
- Acids, Bases, and Period 3 Elements.
- Transition Metals and Aqueous Ion Reactions.
- Aromatic Chemistry, Organic Synthesis, and NMR Spectroscopy.

Entry Requirements

GCSE – Grade 6 in Maths

GCSE – Grade 6 in Chemistry or 6–6 in Combined/Dual Science

You must also study another STEM A level e.g. Maths/Physics/Biology.





Apply Now

SUBJECT

COMPUTER SCIENCE A Level

ABOUT A LEVEL COMPUTER SCIENCE

The study of how Computer Systems work, looking at everything from the physical components to the logical structures and the software that makes them usable. You will learn how code is interpreted and executed and how computers and humans interact and communicate with each other.

WHY STUDY THIS SUBJECT?

If you are interested in how a computer works, and applying logical problem solving skills to practical problems in the digital world, then computer science is the subject for you. By learning how software is developed, how hardware functions, and the ways in which hardware and software interact you will gain a deeper understanding of both the power and limitations of computer systems.

WHAT CAN YOU EXPECT FROM A LEVEL COMPUTER SCIENCE?

The course is delivered as a mix of theory and practical activity with exam-style practice embedded from the very start. Individual and group work tasks will be utilised throughout the course. A minimum of 30% of your contact time is dedicated to specifically developing programming skills and this supports the coursework element.

WHAT CAN I DO WITH A QUALIFICATION IN THIS SUBJECT?

The subject can lead to degrees in Cybersecurity, Software Engineering, Games Development, and Information Systems.

It also offers a wide range of specialist career opportunities, including roles such as Cybersecurity Analyst, Database Engineer, Systems Developer, UX Designer, Network Analyst, Web Engineer, Mobile Computing Engineer, and Quality Assurance Tester.

HOW IS THE SUBJECT ASSESSED?

The assessment comprises 80% exams and 20% coursework. The exams include two papers:

Paper 1 focuses on Computer Systems.

Paper 2 on Algorithms and Programming.

The coursework involves developing a piece of software entirely by the student, and you will be supported throughout the course in this part of your study.

COURSE SUMMARY

Module 1

Computer Systems.

Module 3

Programming Project.

Module 2

Algorithms and Programming.

Module 4

Global Business.

Entry Requirements

In 2024 the entry requirements are 6 or above in GCSE Maths, 5 or above in GCSE English and 6 or above in GCSE Computer Science. If Computer Science not taken, must have grade 66+ in Dual Science and show genuine interest and recent coding practice.





Apply Now

SUBJECT

DRAMA AND THEATRE A Level

ABOUT A LEVEL DRAMA AND THEATRE

Drama and Theatre is a subject for you if you possess a strong interest in performing or theatre design. It involves exploring and practically engaging with drama, developing an understanding of relationships, politics, culture, and societal issues. It also includes a focus on live theatre and how it reflects and influences our understanding of the past, present, and future.

WHY STUDY THIS SUBJECT?

Drama is an excellent opportunity for you to develop a wide range of skills that will prepare you for future education or employment. From developing your confidence through performance and improving your literacy skills through analysing plays, Drama provides you with invaluable knowledge and skills that will support you in a wide range of careers and higher education subjects.

WHAT CAN YOU EXPECT FROM A LEVEL DRAMA AND THEATRE?

You can expect Drama to enhance creativity, build confidence, and improve communication skills. The subject fosters teamwork, self-expression, and empathy through a mix of academic study and practical performance. Drama offers a supportive space to explore emotions, develop acting techniques, preparing you for both stage and life.

WHAT CAN I DO WITH A QUALIFICATION IN THIS SUBJECT?

There are a wide range of options available to you by studying A Level Drama. Pathways include Drama, English Literature, and Primary Education. Careers encompass Stage and Screen Writing, Acting, Arts Funding, Broadcasting, Choreography, Community Arts Liaison, Costume and Staging, Film/TV Sound Technician, Lighting Engineering, Marketing, Recording, Screenwriting, Stage Management, and Theatre Direction.

HOW IS THE SUBJECT ASSESSED?

The assessment is divided into three components.

Component 1 (40%) involves a written exam covering knowledge and understanding of drama and theatre, studying two set plays, and analysing the work of live theatre makers.

Component 2 (30%) focuses on assessing through a working notebook and a devised performance.

Component 3 (30%) involves a reflective report and the performance of extracts from three different plays.

COURSE SUMMARY

Component 1

Devising.

Component 2

Text in Performance.

Component 3

Theatre Makers in Practice.

Entry Requirements

GCSE – 5 or above in Drama or a similar subject.





SUBJECT

ECONOMICS A Level

ABOUT A LEVEL ECONOMICS

A Level Economics will engage you critically with real world issues and give you the opportunity to apply your economic knowledge and skills to current affairs. A good economist is an independent thinker and someone who recognises the relevance of the subject in understanding the wider global events and how they affect us all.

WHY STUDY THIS SUBJECT?

The A-Level curriculum gives you a good base understanding of the various economic concepts you may encounter when working towards a career in economics or undertaking university study. The subject is a highly valued A level for those looking to pursue a Russell Group university place and is recognised and valued by employers in many finance and business related sectors.

WHAT CAN YOU EXPECT FROM A LEVEL ECONOMICS?

The core learning includes an introduction to markets and market failure, the UK Economy; business behaviour and the labour market and a global economic perspective. As well as dynamic lessons, you will have the opportunity to attend guest lectures from key industry speakers and leading universities.

WHAT CAN I DO WITH A QUALIFICATION IN THIS SUBJECT?

The subject can lead to degrees in Economics, Accounting, Politics and Philosophy.

The subject can lead to a wide range of careers including accountancy, business management, civil service, data analysis, financial advisor and analyst.

HOW IS THE SUBJECT ASSESSED?

The subject is assessed through three written exam papers at the end of your second year.

You will be supported throughout your two years through regular assessments with detailed feedback to help you improve your knowledge and skills.

COURSE SUMMARY

Theme 1

Introduction to markets and market failure.

Theme 3

Business behaviour and the labour market.

Theme 2

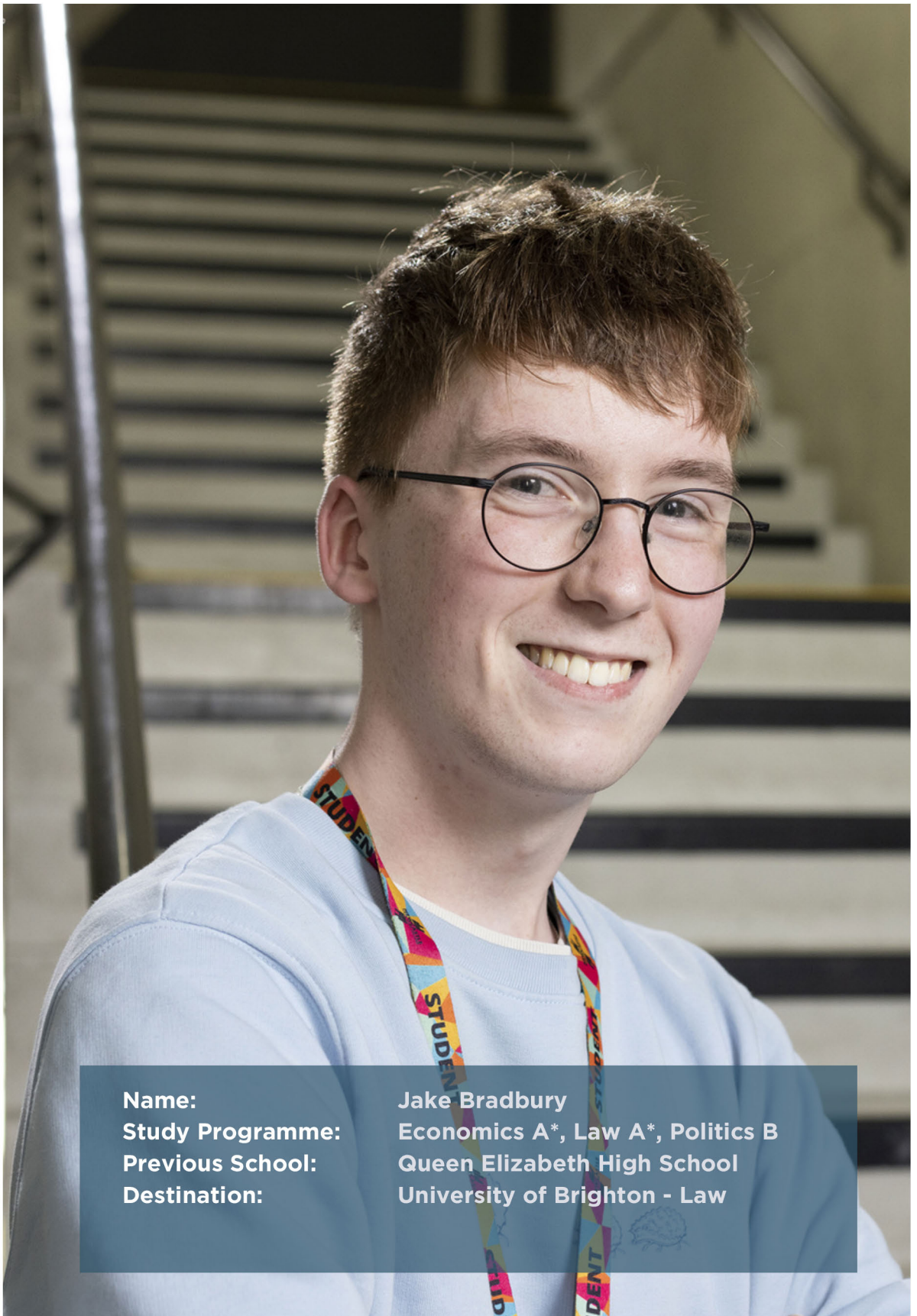
The UK economy – performance and policies.

Theme 4

A global perspective.

Entry Requirements

GCSE – 5 or above in Economics or a similar subject.



Name:	Jake Bradbury
Study Programme:	Economics A*, Law A*, Politics B
Previous School:	Queen Elizabeth High School
Destination:	University of Brighton - Law

SUBJECT

ENGLISH LANGUAGE A Level

ABOUT A LEVEL ENGLISH LANGUAGE

English language at A level is somewhat different from GCSE although it does build upon some of the same skills. On an English Language A level you will develop your existing writing skills; explore how the language is structured across a range of different uses (e.g. journalism); how it is used to signal identity; how language is acquired by children and how it has changed over time.

WHY STUDY THIS SUBJECT?

Studying English Language offers several key benefits. You will develop analytical skills while exploring a diverse range of data and examples of language in use. Additionally, you will enhance your abilities as both producers and interpreters of language in various contexts. The course also fosters independent research skills through investigating language in use, while coursework allows you to develop your writing and reflect on personal or progression-related interests.

WHAT CAN YOU EXPECT FROM A LEVEL ENGLISH LANGUAGE?

You will develop a critical understanding of how language works and varies by context, including the structure, vocabulary, and phonology of English worldwide. As your knowledge grows, so will your ability to use English confidently in various settings. Learning involves teacher-led lessons, group work, data analysis, research, and independent study.

WHAT CAN I DO WITH A QUALIFICATION IN THIS SUBJECT?

English Language A Level can lead to degrees in English, Linguistics, Journalism, Law, and TESOL. The subject opens doors to careers in copywriting, publishing, teaching, communications, content creation, journalism, speech therapy, and roles such as a communications officer, ESL teacher, social media manager, or forensic linguist.

HOW IS THE SUBJECT ASSESSED?

You will be assessed through three external examinations and one piece of coursework.

Component 1 (30%) consists of two sections—Section A on Individual Variation and Section B on Language Change Over Time.

Component 2 (20%) tests your knowledge of spoken or written language development.

Component 3 (30%) involves independent research on subtopics provided by the exam board in Year 13.

The final 20% is coursework, where you will demonstrate your writing skills by producing two pieces from the same genre, tailored for different audiences and purposes.

COURSE SUMMARY

Component 1

Language Variation.

Component 3

Language Investigation.

Component 2


Child Language Development.

Component 4

Crafting Language.

Entry Requirements

GCSE – 5 or above in English Language.

A portrait of a young woman with long, straight brown hair, smiling warmly at the camera. She is wearing a black sleeveless top and a colorful lanyard with the word 'STUDENT' repeated in various colors. A small star-shaped pendant hangs from a necklace around her neck. The background is a plain, light-colored wall.

Student of the Year
in English Language

Name:	Rosie Bamling
Study Programme:	English Language A, Psychology A, Sociology B
Previous School:	Queen Elizabeth High School
Destination:	University of Brighton – Law

SUBJECT

ENGLISH LITERATURE A Level

ABOUT A LEVEL ENGLISH LITERATURE

English Literature allows you to read widely and independently, and engage with texts critically and creatively with a range of novels, plays and poems. You will study a wide range of authors from various time periods from Shakespeare and Wordsworth to Atwood and Shelley.

WHY STUDY THIS SUBJECT?

Studying English literature deepens understanding of human experiences, cultures, and history. It enhances critical thinking, empathy, and communication skills by analysing diverse texts and narratives.

Literature fosters creativity, enriches vocabulary, and helps us explore complex ideas, emotions, and societal issues, making it valuable for both personal growth and professional development.

WHAT CAN YOU EXPECT FROM A LEVEL ENGLISH LITERATURE?

In English Literature, expect critical reading, text analysis, essay writing, and class discussions. Core areas include literary theory, historical contexts, genres, and themes. Learning focuses on developing independent critical thinking, communication and creative skills.

WHAT CAN I DO WITH A QUALIFICATION IN THIS SUBJECT?

Students can progress on to university study in English Literature, English Language, Creative Writing, Drama, Journalism, Law and Philosophy.

Careers can include teaching, advertising, arts and culture specialist, content writing, copywriter, editorial assistant, marketing/market researcher, paralegal, and technical writer.

HOW IS THE SUBJECT ASSESSED?

The assessment comprises four components:

Component 1 (30%) is a 2-hour 15-minute exam on Othello and A Streetcar Named Desire.

Component 2 (20%) involves a 1-hour 15-minute exam on Frankenstein and The Handmaid's Tale.

Component 3 (30%) is a 2-hour 15-minute exam on Contemporary Poetry and The Romantics.

Component 4 (20%) is coursework involving analysis of The Lonely Londoners and an additional chosen text.

COURSE SUMMARY

Component 1

Drama.

Component 3

Poetry.

Component 2

Prose – Science and Society.

Component 4

Coursework.

Entry Requirements

GCSE – 5 or above in English Literature.

English Literature and
Drama Trip to London
2024



Apply Now

SUBJECT

FILM STUDIES A Level

ABOUT A LEVEL FILM STUDIES

Film Studies is the study of the major Art form of the 20th Century – Film. It is designed deepen your understanding, appreciation and enjoyment of film. You have the opportunity to explore a range of different style of film, including silent cinema, as well as looking at the practical side and creating your own short film.

WHY STUDY THIS SUBJECT?

Film Studies offers an excellent opportunity to explore how films are crafted to create meaning for audiences, from Silent Cinema to the rise of CGI in the 1980s.

You'll also have the chance to produce your own short film, gaining hands-on experience with camera work, directing, and production.

WHAT CAN YOU EXPECT FROM A LEVEL FILM STUDIES?

Your classroom time will be spent watching your set text films across a range of exciting filmmaking styles, as well as a real focus on the discussion and development of your analytical skills. You will take part in discussion groups about the methods behind directors decisions as well as how this will impact the audience.

In addition, you will have ongoing opportunities to practice your filmmaking skills.

WHAT CAN I DO WITH A QUALIFICATION IN THIS SUBJECT?

The subject can lead to degrees in film studies, filmmaking, film production, and media studies.

It also offers a range of career opportunities, including roles such as director, location scout, film runner, TV and theatre production assistant, marketing specialist, journalist, and roles in the broader social sciences.

HOW IS THE SUBJECT ASSESSED?

The assessment consists of three components.

Component 1 (35%), covers Hollywood from 1930–1990 (comparative study), American film since 2005, and British film since 1995 (two-film study).

Component 2 (35%), includes global films (two-film study), documentary film, silent cinema, and experimental film (1960–2000).

Component 3 (30%), involves practical coursework, where students create either a short film or a screenplay with a digital storyboard, along with a written evaluation.

Core study areas focus on key elements of film form, spectator responses, and the contextual analysis of film.

COURSE SUMMARY

Component 1

Varieties of Film and Filmmaking.

Component 2

Global Filmmaking Perspectives.

Component 3

Production (Practical Coursework).

Entry Requirements

GCSE – 5 or above in Film Studies or a similar subject.



FURTHER MATHEMATICS

A Level

ABOUT A LEVEL FURTHER MATHEMATICS

Further Mathematics is designed to broaden and deepen the mathematical and skills developed when studying A-level mathematics. It develops your mathematical ability and introduces you to new topics such as matrices and complex numbers, which are extremely useful for a variety of maths-rich degrees.

WHY STUDY THIS SUBJECT?

Further Maths will introduce you to new and interesting mathematical concepts. It will also help to develop your problem solving skills, which will help to boost your performance in A Level mathematics. If you plan to apply for a degree that has a high mathematical content, an AS or A level in Further Maths will give your application additional value.

WHAT CAN YOU EXPECT FROM A LEVEL FURTHER MATHEMATICS?

Further Maths is divided into Core Pure Mathematics, Further Mechanics, and Decision Mathematics. Core Pure Mathematics extends A-level maths content, covering topics like proof, complex numbers, and differential equations. Further Mechanics builds on A-level mechanics, focusing on momentum, energy, and elastic collisions. Decision Mathematics explores algorithms, graph theory, critical path analysis, and linear programming, with connections to Computer Science.

WHAT CAN I DO WITH A QUALIFICATION IN THIS SUBJECT?

Further Maths is a useful course for degrees in sciences, engineering, statistics and computing, as well as mathematics itself. There is also a wide range of career opportunities including roles in engineering, data analysis, actuarial science, finance, and economics.

HOW IS THE SUBJECT ASSESSED?

The subject is assessed fully through exams. For the AS qualification, there are 2 exams at the end of Year 12. Both exams are 1 hour 40 minutes long. The first assesses the core pure maths content and the second assesses the further mechanics and decision content.

For the A-level qualification there are 4 exams at the end of Year 13.

All of the exams are 1 hour 30 minutes long. two of the exams cover the core pure content, one covers the further mechanics content and one covers the decision mathematical content.

COURSE SUMMARY

Component 1

Core Pure Mathematics.

Component 2

Further Mechanics.


Component 3

Decision Mathematics.

Entry Requirements

GCSE – 7 or above in Maths.

Must also be Studying A Level Maths.

A portrait of a young woman with long brown hair and bangs, wearing glasses and a green floral top. She is smiling slightly and looking upwards. She has a colorful lanyard with 'STUDENT' written on it and a rainbow flag pin. A dark blue text box in the top right corner contains the text 'Student of the Year in Further Maths'. A larger dark blue text box at the bottom contains her name, study programme, previous school, and destination.

**Student of the Year
in Further Maths**

Name: Sunny Gilchrist
Study Programme: Maths A*, Computer Science A, Further Maths A
Previous School: Berwick Academy
Destination: Sheffield University – Computer Science

SUBJECT

GEOGRAPHY A Level

ABOUT A LEVEL GEOGRAPHY

Geography is the study of Earth's physical features, environments, and human societies, exploring how they interact and shape one another. It encompasses diverse topics such as climate, landforms, populations, cultures, economies, and political systems. Geography helps you understand the world's complexities, challenges, and opportunities on local and global scales and in a world in which our future is being increasingly defined by the challenge of climate change.

WHY STUDY THIS SUBJECT?

A Level Geography gives you the chance to study both aspects of human and physical Geography giving you a much broader understanding.

You will develop a range of inter-disciplinary skills such as critical thinking, problem-solving, data collection and analysis and have the opportunity to explore and develop an independent piece of research via your coursework module.

WHAT CAN YOU EXPECT FROM A LEVEL GEOGRAPHY?

Each week in Geography, you'll build subject knowledge, essay writing, and maths skills to support you with your exams. You'll also go on a number of trips to develop fieldwork skills across the region.

WHAT CAN I DO WITH A QUALIFICATION IN THIS SUBJECT?

By studying A Level Geography, a range of progression routes becomes available. Students can pursue degrees in environmental science, architecture, politics, sociology, and economics.

This subject also opens up various career opportunities in fields such as urban planning, environmental consultancy, policy analysis, and social research.

HOW IS THE SUBJECT ASSESSED?

The assessment consists of four components:

Component 1 (30%), Component 2 (30%), and Component 3 (20%) are each 2-hour 15-minute written examinations that test various areas of the course.

Component 4 (20%) is coursework, allowing for independent research and analysis. Together, these components provide a comprehensive evaluation of your skills and knowledge.

COURSE SUMMARY

Component 1

Changing Places and Changing Coastal landscapes.

Component 2

Global Systems and Global Governance.

Component 3

Tectonic Hazards, Energy Challenges and Dilemmas & Development in Africa.

Component 4

Independent Investigation (Coursework).

Entry Requirements

GCSE – 5 or above in Film Studies or a similar subject.



Apply Now

GRAPHIC COMMUNICATION A Level

ABOUT A LEVEL GRAPHIC COMMUNICATION

Graphic Communication is the study of design in a more digital form. It is about communicating ideas and information through graphic imagery, illustration, marketing, games design and UX design involving visual and textual content. You will be encouraged to develop individual solutions to design briefs in both traditional and digital media.

WHY STUDY THIS SUBJECT?

Studying Graphic Communication lets you explore the digital world and learn how to capture audience interest through unique selling points. You'll gain skills in cutting-edge programs and professional design, and it opens doors to fields like Animation, UI/UX, Illustration, and Motion Graphics, preparing you for the Creative Industries.

WHAT CAN YOU EXPECT FROM A LEVEL GRAPHIC COMMUNICATION?

The subject is taught through project-based learning, with Year 12 focusing on skill-building in core design programs. You'll apply these skills in Component 1 coursework, developing a personal investigation or live project brief. This approach lets you explore your interests and specialisms throughout Years 12 and 13, while classroom time encourages independence and self-challenge.

WHAT CAN I DO WITH A QUALIFICATION IN THIS SUBJECT?

The subject can lead to degrees in Animation, UI/UX Design, Interior Design, and Marketing.

It also opens doors to a wide range of careers, including Animator, Design Assistant, Typographer, Motion Graphics Specialist, Illustrator, Games Designer, and Marketing Professional.

HOW IS THE SUBJECT ASSESSED?

Component 1 – Personal investigation
You will develop work for a personal investigation into an idea, issue, concept or theme supported by written material of 1000–3000 words.

Component 2 – Externally set assignment
(15 hours supervised time)

You will produce personal work in response to one of eight exciting starting points.

COURSE SUMMARY

Component 1

Personal investigation. You will develop work for a personal investigation into an idea, issue, concept or theme supported by written material of 1000–3000 words.

Component 2

Externally set assignment. (15 hours supervised time). You will produce personal work in response to one of eight exciting starting points.

Entry Requirements

GCSE – 5 or above in Art and Design or similar subject.

(Portfolio required if student does not meet the above requirements)





NETFLIX ORIGINAL

You can not run from yourself for long

STRANGER
"DON'T TALK TO SOMEONE YOU DON'T KNOW"

DIRECTED by Vivienne Juv
DOPPELGÄNGER

In this desolate town of Wilkesborough lives a young queer teen called Flare Jones. In some twist-of-fate circumstances people started to disappear and everyone looks at their "normal" sides they were intent not to realize someone made by the government to try and wipe out the world so they could replace this imperfect world with a new one and their friends run away from these murders and disappearances, however Flare starts to have suspicions and she starts to investigate and wonder if they might be a Doppelgänger.

This indie-style thriller would make it the best of the genre if it wasn't for the fact that there are plenty of other films in the same genre of sci-fi and horror that are better than this. The story is not that good, the acting is not that good, the score does not help either. The only thing that makes this movie watchable is the fact that it's a good idea.

Doppelgänger

Special Features!
▶ INTERVIEW WITH THE ACTORS
▶ BEHIND THE SCENES
▶ CUT SCENES
▶ AND EVEN MORE!

Michael Cheval Sarah Goodwin

DEFINITION
The Smart Man's Guide to Success

Founder and CEO
ARRON GRIEF

Perfectionism: The Confidence Killer
Toxic Work Culture and How to Avoid it
10 Steps to a Productive Life



Apply Now

SUBJECT

HISTORY A Level

ABOUT A LEVEL HISTORY

A Level History is the study of past events, societies and individuals. Through the development of your knowledge, the study of primary sources and the debates and views of historians you will gain a greater understanding into the patterns, causes and consequences of human actions in the past.

WHY STUDY THIS SUBJECT?

We have selected a range of modules that give you the opportunity to study some of the most significant moments and characters in the development of modern European and world history. You will examine some key historical concepts such as revolution, dictatorship, democracy and genocide across a range of different countries and societies.

WHAT CAN YOU EXPECT FROM A LEVEL HISTORY?

In class, you will find a supportive environment in which discussion amongst peers and expert questioning from your teacher are key components of every lesson.

We dedicate lesson time every week to support you in the development of your written historical skills. There are opportunities weekly for you to access additional support from the History team via subject intervention sessions.

WHAT CAN I DO WITH A QUALIFICATION IN THIS SUBJECT?

Many students will progress onto History related courses at university and careers beyond, such as industry careers within the museum and heritage sector.

A Level History also facilitates progression into a range of wider areas such as law, politics, international relations and teaching.

HOW IS THE SUBJECT ASSESSED?

You will be assessed in History via a combination of examinations and coursework:

Unit 1: 1 hour 30 minutes examination (25% of A Level grade).

Unit 2: 1 hour examination (15% of A Level grade).

Unit 3: 2 hour 30 minutes examination (40% of A Level grade).

Unit 4: Coursework (20% of A Level grade).

COURSE SUMMARY

Component 1

Britain 1930–1997.

Component 2

American Revolution 1740 – 1796.

Component 3

Russia and its Rulers 1855–1964.

Component 4

Historical Enquiry.

Entry Requirements

GCSE – 5 or above in History or a similar subject.





Apply Now

SUBJECT

LAW

A Level

ABOUT A LEVEL LAW?

Law examines the rules and principles governing our lives through Acts of Parliament and case law, impacting everything from daily activities to landmark societal decisions. This course teaches how the legal system operates, including the roles of legal professionals and the processes of making and enforcing laws in both civil and criminal contexts.

WHY STUDY THIS SUBJECT?

In this A-level course, you'll explore criminal and civil law, and the English Legal System, covering new content weekly. You'll research key legal areas before classes to debate law evolution, effectiveness, and reform. Apply your knowledge to scenarios, advise clients, participate in Bar Mock Trials, enhance advocacy skills, and engage with legal professionals through career enrichment activities.

WHAT CAN YOU EXPECT FROM A LEVEL LAW?

Studying law will provide you with a versatile and valuable set of skills such as problem solving through identifying legal issues and providing advice, critical evaluation skills through discussing the effectiveness of the law and whether it is fit for purpose. You will also develop communication and oracy skills through a range of enrichment activities such as Bar Mock Trial and advocacy workshops on trips.

WHAT CAN I DO WITH A QUALIFICATION IN THIS SUBJECT?

Studying Law can prepare you to start your journey towards your legal career as a solicitor, barrister, legal executive, or paralegal.

It can also lead to other careers in the Crown Prosecution Service, police, the home office and other government institutions.

HOW IS THE SUBJECT ASSESSED?

At the end of the two-year course students will sit three separate exams.

The Legal System and Criminal Law, Law Making and The Law of Torts and our optional module: Contract Law.

Each exam is two hours long containing several extended essays and there is no course work requirement.

During your time on the course you will sit several mock exams, monthly ongoing assessment's and weekly knowledge tests.

COURSE SUMMARY

Topic 1

The Legal System.

Topic 2

Criminal Law.

Topic 3

Law Making.

Topic 4

Law of Tort.

Topic 5

The Nature of Law.

Topic 6

Contract Law.

Entry Requirements

GCSE – 5 or above in English Language and Literature.





Name: Peace Oshodin
Study Programme: Law A, History B and Psychology B
Previous School: Walker Riverside Academy
Destination: Queen Mary University of London - Law

SUBJECT

MATHEMATICS A Level

ABOUT A LEVEL MATHEMATICS

Maths is an exciting and challenging subject, aiming to develop an understanding of maths and mathematical processes in a way that promotes confidence and builds your skills.

You will extend your mathematical skills and techniques learned at GCSE and explore how to apply them to complex problems and real world scenarios.

WHY STUDY THIS SUBJECT?

Maths is a facilitating subject, allowing you to access a wide variety of STEM and other subjects at degree level. Students will develop the ability to solve problems and think logically whilst exploring advanced areas of both pure and applied mathematics. These skills are highly sought after by employers and universities alike.

WHAT CAN YOU EXPECT FROM A LEVEL MATHEMATICS?

The Maths team are skilled and experienced in helping students to achieve their mathematical potential. Maths will be taught employing a variety of methods, providing opportunities to develop team-working skills, effective communication and most importantly resilience. You will have the opportunity to undertake both maths-based enrichment activities and national maths challenges over the 2 years.

WHAT CAN I DO WITH A QUALIFICATION IN THIS SUBJECT?

Maths is considered the most commonly required subject throughout all degrees. Many STEM degrees require Maths in addition to their main focus subject; these include Physics, Engineering and Actuarial Science.

Maths is also beneficial for degrees in Chemistry, Biochemistry, Medicine, Computer Science and Finance.

HOW IS THE SUBJECT ASSESSED?

The course is assessed by three exams at the end of the second year.

There are two pure exams and one applied exam (split into Mechanics and Statistics papers).

Each exam is 2 hours long and assesses content from the 2-year programme.

COURSE SUMMARY

Component 1

Pure Mathematics.

Component 2

Applied Mathematics (Statistics).

Component 3

Applied Mathematics (Mechanics).

Entry Requirements

GCSE – 6 or above in Mathematics



[Apply Now](#)

SUBJECT

MEDIA STUDIES A Level

ABOUT A LEVEL MEDIA STUDIES

Media Studies equips you to critically evaluate media, exploring how messages are communicated, how institutions influence media production, and how audiences consume content.

You'll examine media's role in society, its effects on audiences, and the impact of cultural, social, and political contexts.

WHY STUDY THIS SUBJECT?

Studying Media Studies will provide you with a huge range of benefits to allow you to explore exciting opportunities in Higher Education. This subject forms the basis of understanding as to how audiences read Media, which opens up doors for you in things such as Journalism, Creative Writing & practical Media and design. The subject will give you fundamental knowledge to be able create pieces of media and design through the use of your practical coursework as well as give you clear understanding of the careers in the Creative Industries.

WHAT CAN YOU EXPECT FROM A LEVEL MEDIA STUDIES?

Media Studies offers a blend of practical and theory-based lessons, allowing you to explore TV, films, and understand industry and audience reactions. You'll engage in discussions, practical workshops, and develop research and creative writing skills in an exciting classroom environment.

WHAT CAN I DO WITH A QUALIFICATION IN THIS SUBJECT?

There are a wide range of university courses and career pathways that you can take by studying A Level Media Studies.

This includes Digital Media, Marketing Executive, Journalism, Media, Buyer, Public Relations Specialist, Publisher, Social Media Executive, Television and Radio, Video Editor, and Writer are just some of the creative roles followed by a student of Media Studies.

HOW IS THE SUBJECT ASSESSED?

The assessment includes three components.

Component 1 (35%) covers Media Products, Industries, and Audiences, examining media language, representation, and contexts in forms like advertising, music videos, or newspapers.

Component 2 (35%) provides an in-depth study of three media forms, analysing set products such as TV, magazines, and websites.

Component 3 (30%) involves creating a media text based on research and a brief, accompanied by a statement of aims and intentions.

COURSE SUMMARY

Component 1

Media Products, Industries and Audiences.

Component 2

Media Forms and Products in Depth.

Component 3

Cross-Media Production.

Entry Requirements

GCSE – 5 or above in Media Studies or a similar subject.



Apply Now

SUBJECT

MUSIC TECHNOLOGY A Level

ABOUT A LEVEL MUSIC TECHNOLOGY

Music Technology will support you in forming personal and meaningful relationships with music technology through the development of musical knowledge, understanding and skills.

These include recording, technology-based composition, listening, analysing and production. You will be encouraged to engage with a wide range of music technology techniques and develop an understanding of the historical and cultural contexts of the use of music technology.

WHY STUDY THIS SUBJECT?

Music Technology is an exciting opportunity to delve into developing your knowledge, skills and understanding of exactly how you can produce music within a studio environment. This gives you the core knowledge needed to go onto practical and state of the art studio based courses within higher education. You get to explore how to record music, as well as to produce it and work through the full process of creating music.

WHAT CAN YOU EXPECT FROM A LEVEL MUSIC TECHNOLOGY?

Lessons focus on developing practical skills in a state-of-the-art classroom with access to a Mac Suite, and Recording Studio. You'll work with Logic, MIDI keyboards, and produce various music styles while learning to analyse techniques. You'll also record and manipulate music in a professional setting.

WHAT CAN I DO WITH A QUALIFICATION IN THIS SUBJECT?

The subject can lead to degrees in Music Production, Sound Engineering, Audio Technology, and Music Composition.

It also offers a variety of career opportunities, including roles such as AV Technician, Digital Audio Editor, Live Sound Engineer, Music Producer, Music Therapist, Sound Designer, SFX Technician, and Composer for video games and other media.

HOW IS THE SUBJECT ASSESSED?

The assessment consists of four components.

Component 1 (20%) is a non-examined assessment where you develop skills in capturing, editing, processing, and mixing an audio recording of a song provided by the exam board.

Component 2 (20%) involves creating and manipulating sounds to produce a technology-based composition using state-of-the-art facilities.

Component 3 (25%) is an exam testing your knowledge of recording and production techniques.

Component 4 (35%) focuses on understanding and applying editing, mixing, and production techniques through practical outcomes using industry-standard programs.

COURSE SUMMARY

Component 1

Recording.

Component 2

Technology Based Composition.

Component 3

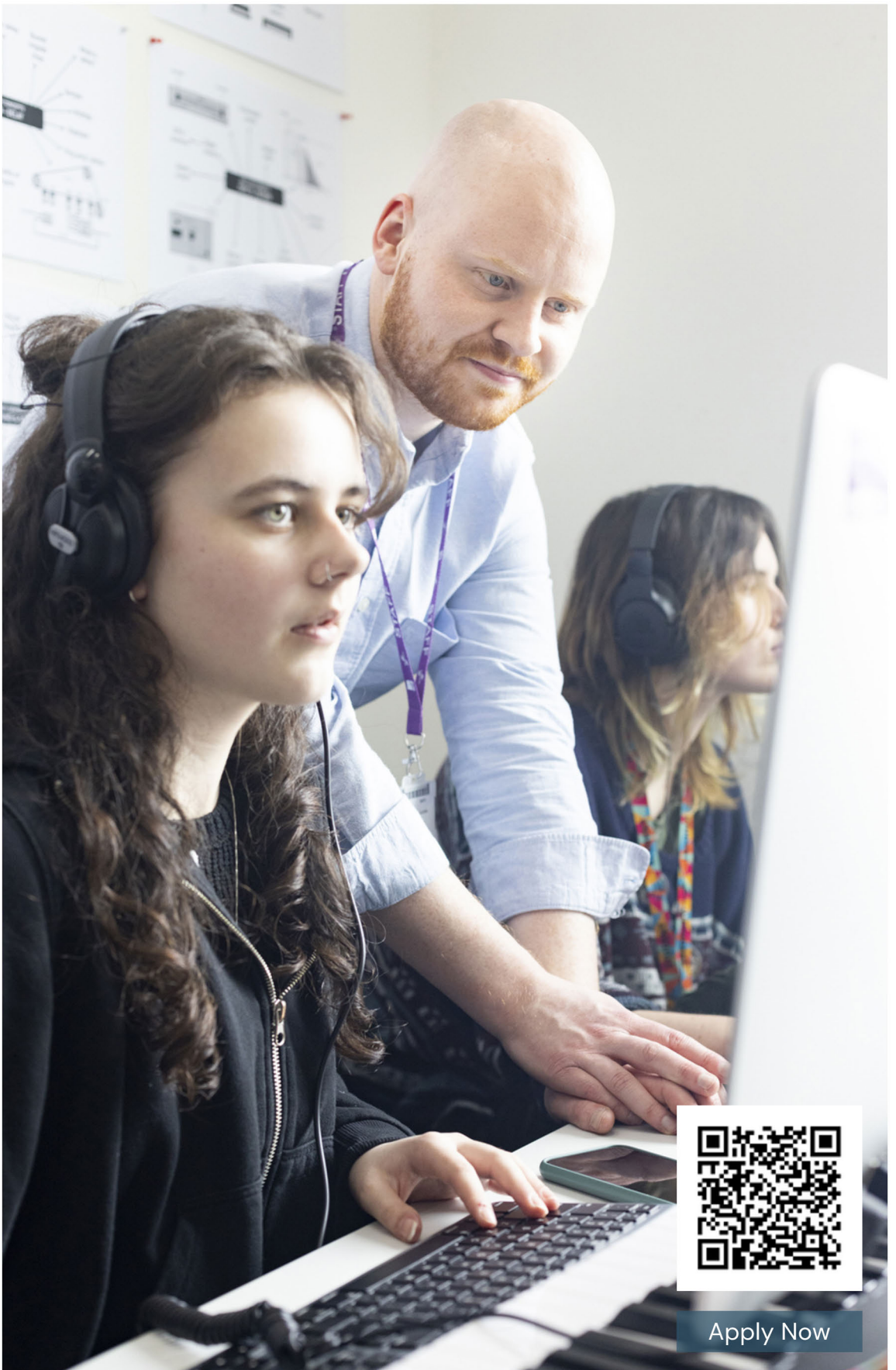
Listening and Analysing.

Component 4

Producing and Analysing.

Entry Requirements

A GCSE in Music is desirable but not essential. You MUST have an active interest in the subject ie, play an instrument, be a bedroom DJ etc. or partake in practical Music groups.



Apply Now

PHILOSOPHY, ETHICS AND RELIGION A Level

ABOUT A LEVEL PHILOSOPHY, ETHICS AND RELIGION

Philosophy, Ethics and Religion (PER) is the study of Philosophy of Religion which considers questions relating to the problem of evil and arguments for the existence of God.

Religious Ethics which considers both religious and secular moral principles. Within Buddhism students study the beliefs and practices of Buddhism including contemporary issues such as gender and sexuality.

WHY STUDY THIS SUBJECT?

PER supports you in developing knowledge of philosophical arguments and skills of analysis and the ability to defend your own judgements. Ethics offers a unique opportunity to debate issues pertinent to your own life while considering different perspectives taken by great thinkers. Buddhism provides access to the beliefs and practices and an opportunity to explore misconceptions of a popular Eastern Philosophy.

WHAT CAN YOU EXPECT FROM A LEVEL PHILOSOPHY, ETHICS AND RELIGION?

You can expect your thinking to be challenged through studies that make you doubt your preconceived ideas or through new ideas yet to be considered. Every topic is the subject of debate and discussion and every exam question an opportunity to examine and evaluate the theories studied.

WHAT CAN I DO WITH A QUALIFICATION IN THIS SUBJECT?

Due to the facilitating nature of this subject you will develop knowledge and skills to support your progression to university or higher level apprenticeships.

You can progress into courses in traditional humanities and social studies subjects or vocational subjects such as business management and healthcare.

Recent alumni from Newcastle Sixth Form College have progressed to study Psychology, Humanities, Modern Languages, Music Production, Politics and Philosophy, English Literature, Health, Education and Social Care and Primary Education

HOW IS THE SUBJECT ASSESSED?

This course is assessed via two examinations. Both papers are 3 hours long.

Paper 1: Philosophy and Ethics.

Paper 2: Buddhism and Dialogues.

COURSE SUMMARY

Component 1

Philosophy: Arguments for God's existence, Problem of Evil, Religious Experiences, Miracles, Life after Death, Religious Language.

Component 3

Buddhism: The Life of the Buddha, his enlightenment, teachings and death.

Component 2

Ethics: Meta Ethics, Free will and Moral Responsibility, Conscience, Natural Moral Law, Utilitarianism, Situation Ethics, Virtue Ethics, Applied ethics to human and animal life and death.

Entry Requirements

GCSE – 5 or above in Religious Studies or a similar subject.



Apply Now

SUBJECT

PHYSICS

A Level

ABOUT A LEVEL PHYSICS

Physics allows you to appreciate how fundamental science works. It is problem solving on both the largest and smallest scales imaginable.

As a Physicist, you can use the laws you uncover to develop new materials and technologies or to explain what the observable universe is made from and how it all works.

WHY STUDY THIS SUBJECT?

Studying physics allows you to develop robust and resilient problem-solving skills that can be applied to any situation. The practical aspects of the course allows you to develop other transferable skills in areas such as experimental design, data analysis, and evaluative techniques, which are crucial to empirical research in practical degree courses.

WHAT CAN YOU EXPECT FROM A LEVEL PHYSICS?

Our A level physics team will use a range of teaching and learning techniques to allow you to build on your GCSE prior knowledge and understanding in a stimulating and supportive environment.

Concepts not covered previously at GCSE level such as; quantum physics, simple harmonic motion, thermodynamics and astrophysics, will be introduced across the two years of study.

WHAT CAN I DO WITH A QUALIFICATION IN THIS SUBJECT?

Physics plays a role in how everything in the observable universe interacts, and therefore physicists have a very diverse range of career pathways.

As problem-solvers, physicists often progress into the various branches of engineering (mechanical, civil, aerospace etc), but other careers could include; Seismologist, Meteorologist, Research Scientist, Cosmologist and Medical Physicist.

HOW IS THE SUBJECT ASSESSED?

A level Physics is assessed by 100% examination. Students sit three exams at the end of their second year of study.

Each exam is two hours long and the three papers are equally weighted.

Exam questions assess your knowledge and understanding of the physics content, but there is a greater emphasis on how you apply your knowledge and understanding qualitatively and quantitatively.

COURSE SUMMARY

Year One

- Forces and motion.
- Electricity.
- Waves.
- Quantum Physics.
- The particle world.

Year Two

- Circular and simple harmonic motion.
- Gravitational and electric fields.
- Magnetic fields and Induction.
- Thermal and Nuclear Physics.
- Radiation.

Entry Requirements

GCSE – Grade 6 in Maths

GCSE – Grade 6 in Physics or 6–6 in Combined/Dual Science.

You must also study A Level Maths.





Apply Now

SUBJECT

POLITICS

A Level

ABOUT A LEVEL POLITICS

Politics is the study of political behaviour, processes, institutions and how people interact with them. Throughout this course you will look at ongoing political issues and debates within both the UK and the USA, and you will develop the ability to discuss and analyse current affairs and political issues and debates.

WHY STUDY THIS SUBJECT?

Studying A-level Politics will provide insight into political beliefs central to an understanding of the modern world. The subject also develops analytical and evaluative skills in relation to interesting topics prevalent in the turbulent political climate of today.

Politics provides great critical thinking skills that would supplement a wide variety of careers and university degrees.

WHAT CAN YOU EXPECT FROM A LEVEL POLITICS?

Politics is assessed by written assessments through the skills of analysis and judgment. Throughout the course you will also be researching key issues, making connections between different areas of study and comparing different political systems. We also have opportunities to meet politicians to question their role and find out about their challenges and the local and national political landscape.

WHAT CAN I DO WITH A QUALIFICATION IN THIS SUBJECT?

The subject can lead to degrees in History, International Relations, Journalism, and Philosophy.

It also provides a pathway to a wide range of careers, including roles such as Civil Servant, Research Officer, and Journalist, with opportunities in both the public and private sectors.

HOW IS THE SUBJECT ASSESSED?

The assessment consists of three 2-hour exams, each with the same structure and question types.

Paper 1 covers Parliament, the Prime Minister, the Constitution, and Devolution, as well as elections, democracy, political parties, and pressure groups.

Paper 2 examines US government and politics, comparing it to the UK and evaluating their effectiveness.

Paper 3 explores Liberalism, Conservatism, and Socialism, along with an optional ideology, analysing their impact on politics.

COURSE SUMMARY

Component 1

Government and Politics of the UK.

Component 2

Government and Politics of the USA and Comparative Politics.

Component 3

Political Ideas.

Entry Requirements

GCSE – 5 or above in Politics or a similar subject.



A portrait of a young woman with long, wavy brown hair and blue eyes, smiling warmly. She is wearing a red turtleneck sweater and a colorful lanyard with the word 'STUDENT' repeated in various colors. The background is a blurred indoor setting.

Student of the Year
in Politics

Name: Frances Walmsley
Study Programme: History A, Politics A and English Literature A
Previous School: Berwickshire High School
Destination: University of Cambridge – History and Politics

SUBJECT

PSYCHOLOGY A Level

ABOUT A LEVEL PSYCHOLOGY

Psychology explores human behaviour, processes of the mind and what factors shape your actions. We look at areas from how your social groups influence your behaviour, how memory works and why it might fail with the onset of dementia.

Psychology also considers how your brain structure and genes can influence you in ways like your temper and how your life experiences shapes your personality and behaviour.

WHY STUDY THIS SUBJECT?

Psychology can be used to explain all human experience and this subject will give you the grounding to help in this analysis.

Psychology is a science subject which gives you vital evaluation and analysis skills for your chosen future career path. We engage in deep debates about whether behaviour is nature or nurture and how we best explain human behaviour.

WHAT CAN YOU EXPECT FROM A LEVEL PSYCHOLOGY?

In Psychology you'll be able to learn through direct teaching, research of your own, discussion and applying taught theories to interesting real world examples. We study areas like prejudice, obedience, memory, aggression, drug addiction, brain areas, hormones, phobias, media influence, mental illness, relationships with your parents, autism and the effects of deprivation on children.

WHAT CAN I DO WITH A QUALIFICATION IN THIS SUBJECT?

This subject can lead to degrees in clinical psychology, counselling, neuroscience, and education.

It also opens doors to diverse career paths, including roles such as clinical psychologist, counsellor, educational psychologist, forensic psychologist, occupational therapist, mental health worker, and researcher.

HOW IS THE SUBJECT ASSESSED?

You are assessed through three exams on different course areas.

Each exam has short questions and essays which ask you to explain and evaluate the concepts and theories of Psychology.

Preparation for exams is built up through lessons and independent study to shape you into a psychological researcher in the making.

COURSE SUMMARY

Topic 1

Social Psychology.

Topic 2

Cognitive Psychology.

Topic 3

Biological Psychology.

Topic 4

Learning Psychology.

Topic 5

Child Psychology.

Topic 6

Clinical Psychology.

Entry Requirements

GCSE – 5 or above in Maths



Apply Now

SUBJECT

SOCIOLOGY A Level

ABOUT A LEVEL SOCIOLOGY

Sociology is the study of social relationships and institutions and seeks to understand human behaviours by looking at how external social factors influence us.

In A level Sociology you will study the family, culture, education, media, crime and research methods.

WHY STUDY THIS SUBJECT?

Studying Sociology will help you to understand the society that we live in and understand the external factors that influence our behaviours. These will be applied to contemporary examples and will help you to identify and analyse the impact these have on individuals and groups in society. You will develop skills to investigate facts and apply evidence to support your arguments and critical thinking.

WHAT CAN YOU EXPECT FROM A LEVEL SOCIOLOGY?

Studying Sociology will help you to develop a wide range of skills that will benefit you as you progress to your next steps in education or work. You will take part in discussions and debates relating to controversial topics and will develop and apply knowledge of research methods. This will help you develop your ability to investigate facts, apply evidence to support your arguments to make reasoned points, develop new ideas and create opinions on societies issues.

WHAT CAN I DO WITH A QUALIFICATION IN THIS SUBJECT?

Studying Sociology can lead to a range of exciting degree course such as sociology, psychology, english, business, law or teaching.

Career options linked to the study of Sociology could include Social Work, Human Resources, Advertising, Policing, Journalism, Teaching and Law.

HOW IS THE SUBJECT ASSESSED?

A-level Sociology is assessed through three exams, which each last 2 hours.

The exams consist of a range of short answer and extended writing questions.

Paper 1: Education with Theory and Methods.

Paper 2: Culture and Identity.

Paper 3: Crime and Deviance with Theory and Methods

COURSE SUMMARY

Topic 1

Culture and Identity.

Topic 2

Education.

Topic 3

Mass Media.

Topic 4

Crime and Deviance.

Topic 5

Theory and Methods.

Entry Requirements

GCSE – 5 or above in Sociology or a similar subject.





SUBJECT

SPANISH

A Level

ABOUT A LEVEL SPANISH

A level Spanish is a rich and engaging programme of study which enables students to develop advanced-level, transferable language alongside a deeper cultural appreciation of Hispanic culture, literature and film in Spanish language.

WHY STUDY THIS SUBJECT?

Studying Spanish will encourage you to widen your horizons and add an international dimension to your A Level programme. You will develop critical thinking and learn to write effectively. You will grow a deep understanding of grammar which will allow you to be more spontaneous.

In addition, you will learn many transferrable skills, such as the ability to communicate clearly, be confident about speaking in public and use problem solving strategies.

WHAT CAN YOU EXPECT FROM A LEVEL SPANISH?

The lessons are varied and help you develop your knowledge of themes and your language skills. Typically, in a lesson, you will learn through listening, researching, reading and speaking about issues of the Hispanic world. You will have lessons dedicated to literature and film. All lessons will help you build on your vocabulary and grammar to enhance your fluency in Spanish.

WHAT CAN I DO WITH A QUALIFICATION IN THIS SUBJECT?

The subject can lead to degrees in Modern Languages, International Business, Translation, and Linguistics.

It also provides career opportunities in fields such as Translation, Interpreting, International Relations, Diplomacy, Teaching, Tourism, and roles within multinational companies.

HOW IS THE SUBJECT ASSESSED?

Throughout the two years, we will help you develop the skills and knowledge to get ready for your final three exams.

Paper 1 (40%): Listening, Reading and Translation into English.

Paper 2 (30%): one essay on a film and one essay on a book and a translation into Spanish.

Paper 3 (30%): Speaking exam.

COURSE SUMMARY

Component 1

Evolution of Spanish society.

Component 2

Culture in Spanish speaking countries.

Component 3

Immigration and Spanish multicultural society.

Component 4

Dictatorship of Franco and transition to democracy.

Entry Requirements

GCSE – 5 or above in Spanish





Apply Now

SUBJECT

EXTENDED PROJECT QUALIFICATION AS LEVEL

An EPQ is an optional additional qualification for students who are keen to extend their studies and commit to independent research.

You will choose your area of study and complete an extended piece of work – either an essay based report or investigation, or a creative piece in your chosen area of research. Projects can be related to a subject you study but should extend beyond A Level content.

The Extended Project Qualification is an AS subject and you can get awarded up to A* grade, which is worth 28 UCAS points.

Throughout the project, you will keep a log to plan and review. At the end of the project you will deliver a presentation on the area of study. You will have regular contact with your supervisor to guide you through your project.

The Extended Project Qualification is a great way to extend your studies and show your passion for a topic, as well as developing independent study, research, and time and project management skills which are integral to later life and higher education.

Applications for the EPQ programme are open for existing students in the spring term of your first year of study at Newcastle Sixth Form College.

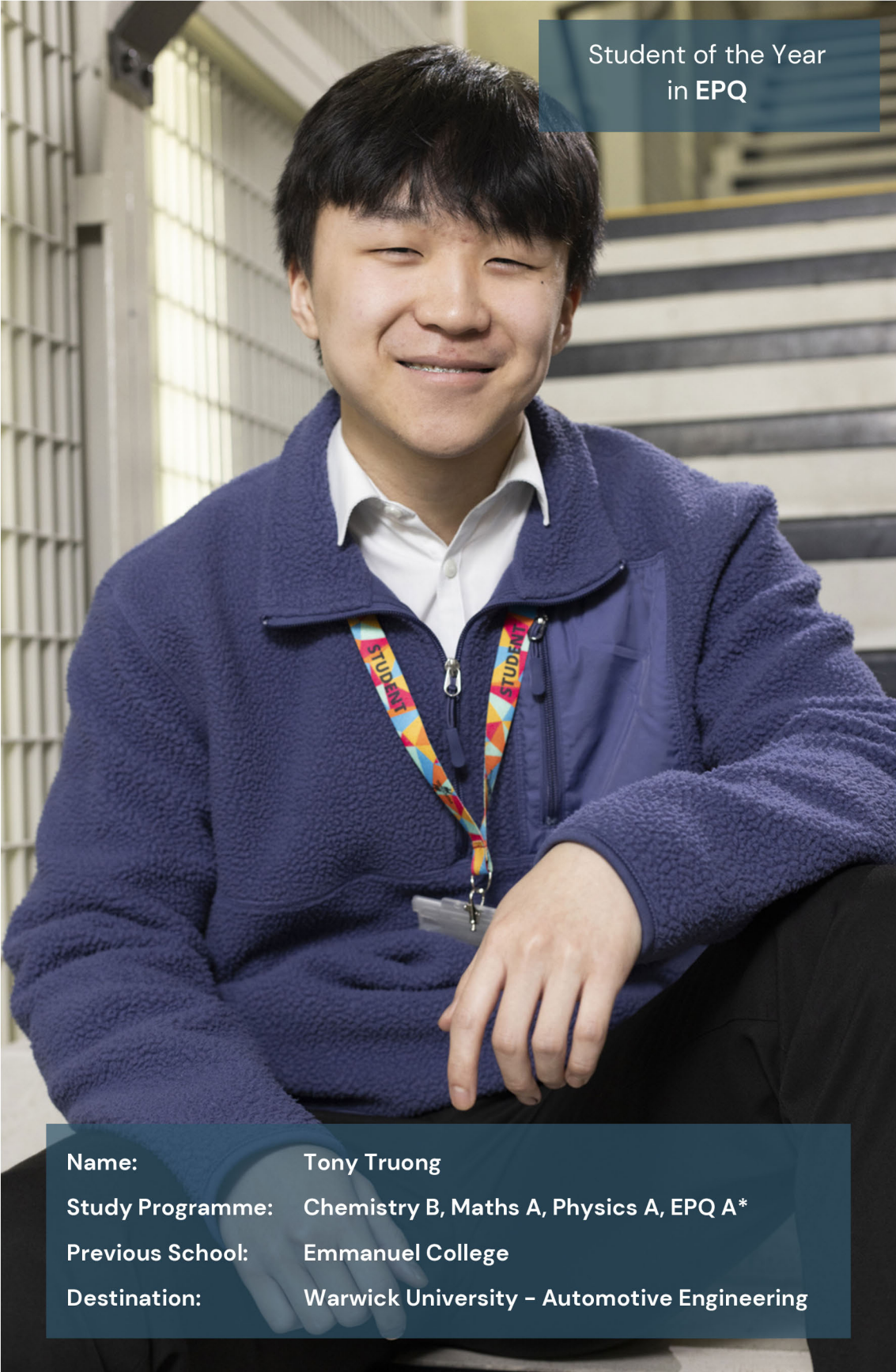
To find out more about EPQ opportunities then come to one of our Open Events and we can discuss this with you, and share some examples of previous students projects.



Entry Requirements

Be working at or above your Minimum Expected Grade in all subjects.
Have a clear academic progression plan. Be self-motivated and professional.
Most importantly: Be driven by a passion for your research area.





Student of the Year
in EPQ

Name: Tony Truong
Study Programme: Chemistry B, Maths A, Physics A, EPQ A*
Previous School: Emmanuel College
Destination: Warwick University – Automotive Engineering

SUBJECT

MATHS IN CONTEXT AS LEVEL

ABOUT AS LEVEL MATHS IN CONTEXT?

Maths in Context is an excellent opportunity to study maths alongside your A levels and is available for those students who are not taking A Level Mathematics.

You will have the opportunity to study areas of maths within various interesting contexts.

WHY STUDY THIS SUBJECT?

Maths in Context allows you to gain valuable UCAS points towards your university application.

The subject improves students' mathematical knowledge to help them with their A level subjects.

WHAT CAN YOU EXPECT FROM AS LEVEL MATHS IN CONTEXT

The subject will be delivered in 3 hours of lessons per week. Maths in Context studies various areas of maths familiar with such as probability, correlation, statistics and places Maths in a world context to encourage application of learning.

You will also be introduced to new areas such as linear programming which is useful for optimising profits within businesses.

WHAT CAN I DO WITH A QUALIFICATION IN THIS SUBJECT?

The subject helps with university applications and provides up to 28 additional UCAS points depending on your grade. Maths in context is a highly desirable subject for university applications.

HOW IS THE SUBJECT ASSESSED?

The subject has two 1 hour 40 minute exams.

The first paper is comprehensions and the second applications.

COURSE SUMMARY

Component 1

Statistics.

Component 2

Correlation.

Component 3

Sequences.

Component 4

Linear Programming.



Apply Now

YEAR 12 ACCESS PROGRAMME GCSE

As an Year 12 Access student, you will have the same opportunities and support to succeed at NSFC. You can participate in enrichment, attend careers events and HE activities and are encouraged to become part of our active college community. This approach ensures you can make great progress and achieve your higher education ambitions.



Find out more about our Year 12 Access Programme

If you are keen to do A Levels but didn't quite get the grades, you can improve your results with this programme which allows you to do 4 GCSEs in a year. These could be resits or entirely new subjects. Entry to this study programme is discussed on an individual basis but typically requires a combination of GCSEs at Grade 3.

It is recommended to have at least one or two passes (grade 4) as this will help with your overall progression within education or employment. If you have not passed either your Maths or English GCSE, these subjects would be compulsory.

It is really important that we help you succeed at your GCSEs so your application will be followed by an admissions appointment to confirm this is the right option for you.

At enrolment you will have a consultation with a senior member of staff, who will look at your existing GCSE results, your planned progression route and possible future career choices.

Attendance, attitude and motivation are all essential for success at Year 12 Access. We will discuss these with you and will also ask for a recent school report. There may be occasions when we contact your previous school for a reference.

To apply for the Year 12 Access Programme, just complete the standard A Level application form, and select Access to Level 3 (A2L3) and your subject choices.





EVENT DATES

4:30PM - 7PM

06 NOVEMBER



Open Event
Facility tours
Meet the Ambassadors
Apply

4:30PM - 7PM

04 DECEMBER



Open Event
Facility tours
Meet the Ambassadors
Apply

4:30PM - 7PM

15 JANUARY



Consultation
Evening

4:30PM - 7PM

05 FEBRUARY



Facility tours
Focus on STEM
Focus on Languages
Apply

4:30PM - 7PM

05 MARCH



Open Event
Facility tours
Focus on Creative
Focus on Humanities

4:30PM - 7PM

02 APRIL



Consultation
Evening

4:30PM - 7PM

07 MAY



IAG Open Event
Subject Advice and
Guidance

SCAN QR CODE
FOR MORE
INFORMATION



0191 272 1001
newcastlesixthformcollege.ac.uk
enquiries@newcastlesixthformcollege.ac.uk

NCG Guarantee

Newcastle Sixth Form College is proud to be part of NCG, one of the country's leading college groups.

We are one of seven colleges across the country that make up NCG, meaning we're a key part of providing education and training to learners, apprentices and employers across the UK.

Together, we share expertise, support each other to grow, help each other to innovate and accomplish real change for individuals, communities and economies across the country.

Student benefits

Students studying at any of our colleges benefit from the **NCG Guarantee**. This guarantee gives all our students access to a range of tools and initiatives centred around a core set of principles. Our courses, additional support services and enrichment activities will equip you with a wider set of skills, all of which aim to make you more employable.

Put simply, the NCG Guarantee gives students access to additional activities, resources and initiatives to help you achieve your ambitions and career goals.

The NCG Guarantee is centred around:

- Employability
- Community
- Enterprise
- Mental Fitness
- Digital.

Throughout your time with us you will be involved in a range of projects and initiatives focused on these principles. Coupled with excellent teaching and learning, you will complete your course with a unique set of skills which help set you up for your future.





newcastlesixthformcollege.ac.uk